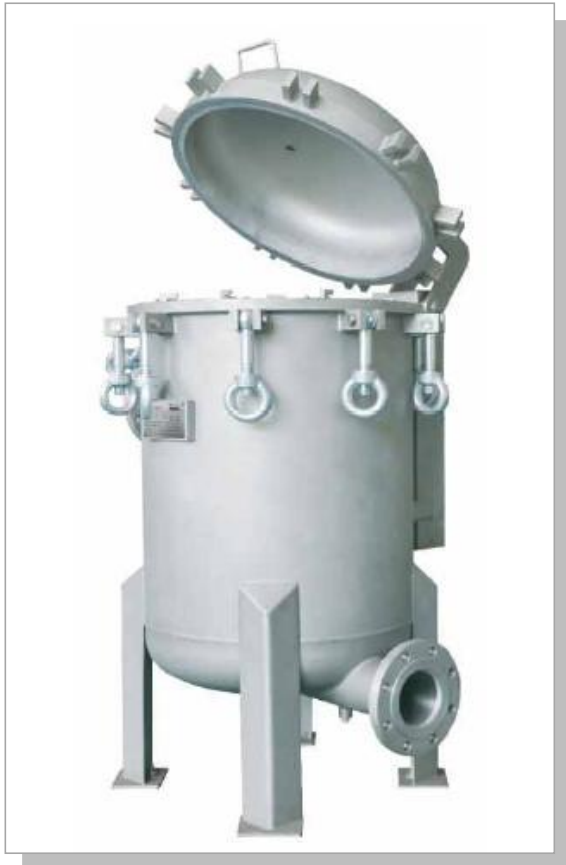




Precision Filtration (Shanghai) Co., Ltd.

Data Sheet • MFSA Vessel

Industrial Liquid Filtration Solutions



Multi Bag Filter Vessel MFSB Series

**Nothing is too large the flow we can't
handle for your filtration need!**

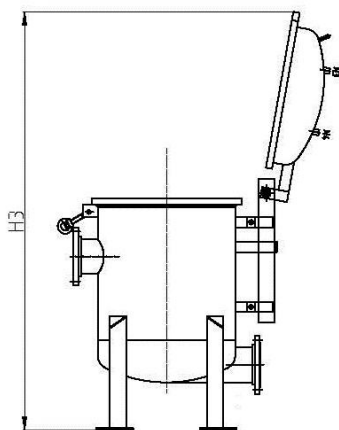
Features

- Unique spring lifting cover opening mechanism
- Individual bag locking to ensure perfect sealing
- Design according to ASME Div VIII section
- Custom made order
- Open and close by spring allows for minimum installation space.

Locating outlet on the bottom side of housing allows the total height 30-50cm lower than standard type housing, thus no foothold or ladder is necessary when replacing filters.

Options

- JIS / DIN flange connection
- Flexible inlet/ outlet orientation
- SS304/ SS316/ SS316L material available



We offer multi bag vessel from 2 bags to 24 bags per vessel with unique spring aided cover closure design and innovative quick closure design which you can open and close the cover for bag change out in less than 5-10 minutes!



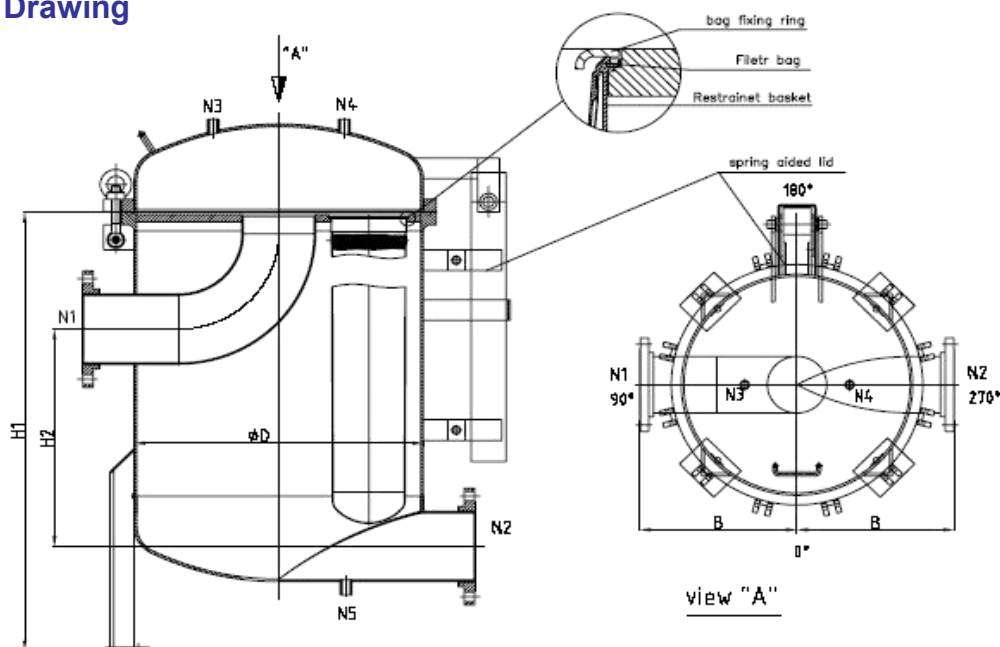
MFSB Ordering Information

| MF4 | A2- | 10- | 040A-SB |
|--------------------------------------------------------|---------------------------------------|-------------------------------------|----------------------------------------------------------|
| No. of Bags per vessel | A - SS304 S - SS316 SL - SS316L | 6 Bar 10 Bar 16 Bar 25 Bar | A - ANSI Flange J - JIS Flange D - DIN Flange |
| 3, 4, 5, 6, 8, 10, 12, 14, 16, 18, 20, 22, 24 | 2 - #2 | | Flange Size 3", 4", 5", 6", 8", 10", 12", 14"..... |

MFSB Engineering Specifications

| Type Code | Bag Size | No. of Bags | Flow Rate | Filter Area | Inlet/Outlet |
|-------------------|----------|-------------|--------------------------|--------------------|----------------|
| MF4A2-10-040A-SB | # 2 | 4 | 160 m ³ /hour | 2.0 m ² | 4" flange |
| MF6A2-10-060A-SB | # 2 | 6 | 240 m ³ /hour | 3.0 m ² | 4", 6" flange |
| MF8A2-10-060A-SB | # 2 | 8 | 320 m ³ /hour | 4.0 m ² | 6", 8" flange |
| MF10A2-10-080A-SB | # 2 | 10 | 400 m ³ /hour | 5.0 m ² | 8", 10" flange |
| MF12A2-10-100A-SB | # 2 | 12 | 480 m ³ /hour | 6.0 m ² | 10" flange |
| MF14A2-10-120A-SB | # 2 | 14 | 560 m ³ /hour | 7.0 m ² | 12" flange |
| MF16A2-10-120A-SB | # 2 | 16 | 640 m ³ /hour | 8.0 m ² | 12" flange |

MFSB Drawing



Precision Filtration (Shanghai) Co., Ltd.

No.85 Kangong Road, Qingpu District, Shanghai 201317, P.R.China
 Tel.: +86-21-5923 8005
 Fax: +86-21-5923 8006
 Email: sales@precisionfiltrationsh.com
 Website: www.precisionfiltrationsh.com



www.precisionfiltrationsh.com
 Industrial Liquid Filtration Solutions