



Heavy Duty Multi-Cartridge Vessel HCF Series

We offer up to 280 rounds cartridge vessel for all industrial needs application with unique spring lift assist design open mechanism make changing cartridge so easy that can be handled by one person.

All HCF cartridge vessels are designed according to ASME standard Sec VIII Div. 1, 2010 Edition.

Specification

- Unique design able to fit either DOE (double open end) or SOE with 222 configuration
- Max Operating Pressure - up to 30 bar design pressure available
- O-Ring Options - Buna, EPDM, VITON or Teflon encapsulated VITON
- Connection Options - ANSI, DIN, JIS Flange, BSP, NPT threaded female socket or others
- Surface Finish Options - Mechanical Polishing, Electropolishing, Glass bead blasted

Features

Four available choices for cover closure:

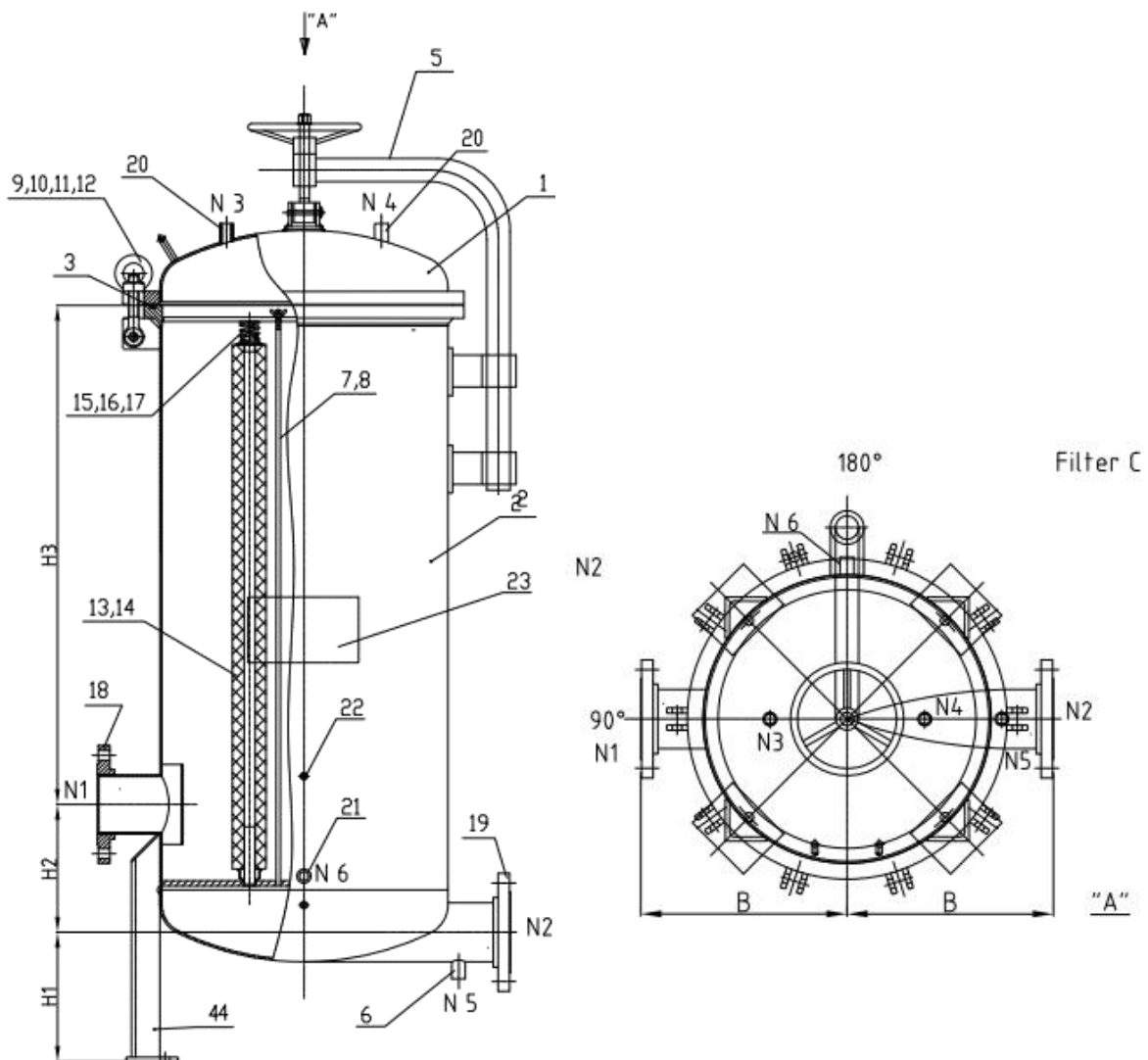
- Davit Arm Lid Cover Closure
- Unique Spring Lift Assist cover closure
- Spring Balancer Cover Closure
- V-clamp Quick Open Cover Closure



HCF Vessel Ordering Information

HCF 1020-	S-	10-	020A
# of rounds From 5 - 280	A - SS304 S - SS316	6 Bar 10 Bar 16 bar 25 bar 30 bar	B - BSP N - NPT A - ANSI Flange J - JIS Flange D - DIN Flange
Length of Cartridge 10", 20", 30" 40", 50", 60"	SL - SS316L CS - Carbon Steel		Flange Size 1" - 24"

HCF Vessel Engineering Drawing



Precision Filtration (Shanghai) Co., Ltd.

No.225, Hufa Road, Fengxian District, Shanghai 201415, P.R.China
 Tel.: +86-21-5923 8005
 Fax: +86-21-5923 8006
 Email: sales@precisionfiltrationsh.com
 Website: www.precisionfiltrationsh.com



www.precisionfiltrationsh.com
 Industrial Liquid Filtration Solutions